

HYBRID PLUS AIRSTRACT® SPECIFICATION DOCUMENT

PRODUCT DESCRIPTION:

Passivent Hybrid Plus Airstract forms part of the Passivent Roof Ventilation Terminals range primarily for natural ventilation applications in commercial and educational buildings.

Hybrid Plus Airstract roof terminal has been designed for applications where a single room space is ventilated directly through the roof. Particularly suited to applications where there could be significant internal heat gains through high occupancy levels and equipment heat energy.

Applications

Suitable for top floor classrooms, top floor offices, school halls, sports halls, retail spaces or other similar applications. The Hybrid Plus Airstract provides cost effective, energy efficient ventilation, allowing occupants to work and learn in a comfortable environment.

An innovative product which combines Passive Stack Ventilation during the majority of the year, an enhanced stack system in peak summer temperatures, and downwards displacement ventilation and re-circulation during the winter using the sound principles of natural ventilation combined with mechanical assistance and intelligent control. This combination gives very effective and energy-efficient ventilation throughout the year and in all weather conditions.

The unique terminal design does not require a vertical internal divider, and therefore the flow performance is independent of wind direction. This ensures the system flow performance does not stall during adverse wind directions.

Hybrid Plus Airstract roof terminal comprises a structural base unit which integrates the damper, mixing chamber and single low powered fan, for simpler installation, with a double bank louvred terminal which provides excellent weather tightness and airflow. Patent applied for.

Developed for the Priority Schools requirement to mix fresh air before it is introduced to the room. In the output specification for the Priority School Building Programme PFI projects it states:

2.8.43. (pg 67) Environmental Requirements 'In naturally ventilated spaces, the Contractor shall provide mixing of ventilation air with room air to avoid cold draughts in the occupied zone during wintertime' This allows operation throughout the year with reduced risk of cold draughts.

MATERIALS:

Terminal

Louvres and cladding of 2.3mm high impact ABS with aluminium frame. Included 4mm insect mesh. Connected to sub base assembly of 12mm thick marine grade plywood, provides structural support.

Patented Mixing Chamber

ABS circular sleeve operating to allow the 3 modes to be selected.

Modulating Damper

Double skin aluminium with ABS thermal break and blade compression seals. Supplied as complete Assembly, with 24V (0-10V) actuator and 0.5m flying lead. Cover grille is eggcrate style in white

Dimensions

Size overall: 1250 x 1250mm

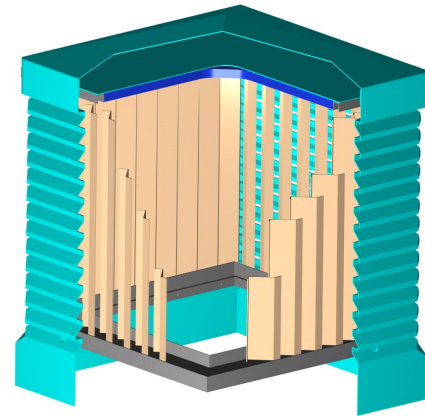
Clear Roof opening required: 1160 x 1160mm

Height, standard: 1391mm on a 0° roof

Weight: Terminal base with mixing chamber 100kg. (based on 1000mm length overall)

Terminal 53kg

Louvre 50kg



Terminal Double Bank Louvre detail
100% (Class A) Rain Rejection, tested to
BS EN 13030: 2001
(dividers removed for clarity)

Information Update

PVCTI26 - Issue 3 - March 2025

projects@passivent.com
passivent.com
+44 (0)1732 850770

passivent

wienerberger

Colour:

Terminal: any standard RAL/BS colour

Sub base unit: RAL9016, white clad below roof line

Ceiling cover grille: RAL9016 (white) as standard, or any standard RAL/BS colour

PERFORMANCE:

Weather resistance

Double bank louvres achieve Class A at 1.5m/s, independently tested at BSRIA to BS EN 13030: 2001.

Wind resistance

Resistant to continuous wind loads at 51m/s, demonstrated by independent BRE tests.

Biological resistance

Louvres exclude most birds in compliance with BRE Digest 415, 1996. 4mm insect screen behind the louvres excludes large nesting insects.

U-Value of $0.89\text{W/m}^2\text{K}$

Free area of 0.56m^2

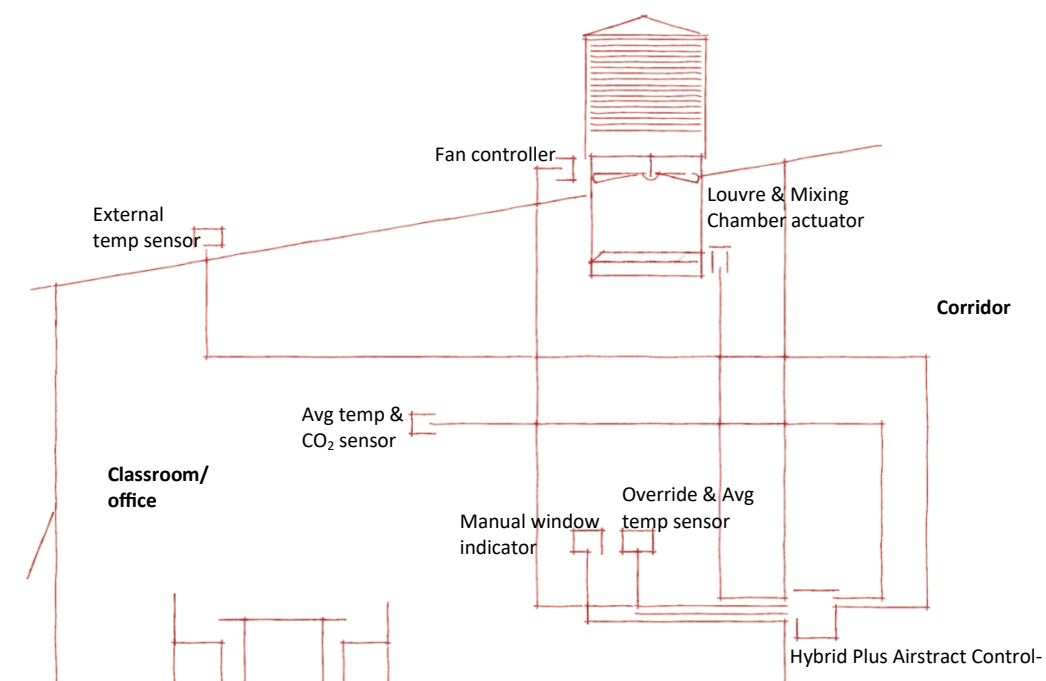
INSTALLATION

Hybrid Plus Airstract roof terminal comprises four main elements: the sub-base unit which houses the modulating damper, mixing chamber and fan, and the double bank louvred terminal, with low-resistance air flow into and out of the building. The sub base unit is fixed to the structure to support the terminal. It is supplied with the necessary fixing brackets and can be used on flat roofs or a builders kerb. The louvred terminal is fixed in position over the sub-base assembly. Then the damper and grille need securing from below.

CONTROLS

The system is fully controlled by the Passivent iC8000 intelligent controller. Each room or space has a combined average temperature and CO₂ sensor to monitor levels. A simple manual override is mounted in the room to allow users to control the system for a timed period, before it returns to automatic control. There is also an external temperature sensor linked to the controller, allowing the system to switch between modes, dependent upon external temperature.

Typical Controller Schematic



Information Update

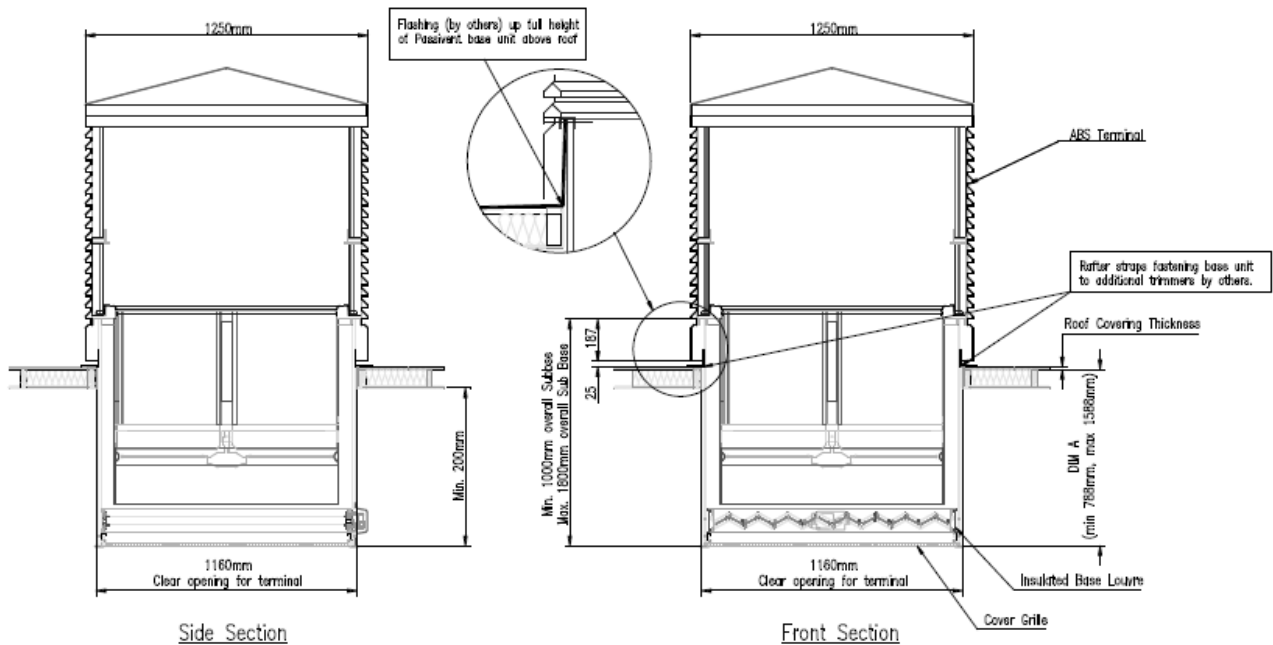
PVCTI26 - Issue 3 - March 2025

projects@passivent.com
passivent.com
+44 (0)1732 850770

passivent

wienerberger

Technical Drawing



NO LEAK GUARANTEE

We offer a 15 Year No Leak Guarantee for this product. This is effective from the date of installation and the installation must be in accordance with the Passivent fixing instructions. Terms and conditions apply - see page below or for further information visit passivent.com/nlg.

IES

The Hybrid Plus Airstract roof terminal is available in the IES Virtual Environment passivent.com/IES.



Passivent maintains a policy of continuous development and reserves the right to amend product specifications without notice.

15 Year No Leak Guarantee

No annual servicing required

This guarantee covers the
Passivent Airstcoop®, **Airsttract®**,
and **Hybrid Plus Airsttract®**
Roof Ventilation Terminals

- We guarantee the above-mentioned terminals will not leak for 15 years from the date of installation.
- The patented double-bank louvre system in the terminal means that your building will be 100% ventilated regardless of the weather conditions.
- No servicing is required - there are no mechanical or electrical items, such as actuators, within the terminal to maintain, therefore no external/roof access is required.

Terms & Conditions

The 15 year guarantee period is effective from the date of installation.

The installation must be in accordance with Passivent fixing instructions otherwise this guarantee will be invalid.

This guarantee does not apply to any failure or defect caused by accidental damage, neglect, abuse, misuse, alteration, shipping damage, unauthorised repair or modification, or causes external to the product such as, but not limited to, a natural disaster.

This guarantee is in addition to your statutory rights and is transferable to any future owner of your building provided that the terminals have been paid for.

passivent

**building
product design**

Passivent is certified under the ISO 9001 quality standard, ISO 14001 environmental standard and ISO 45001 health and safety standard.

910510
May 2023 | Issue 1

