

RAD AIRSCOOP SPECIFICATION DOCUMENT

Product Description:

Passivent RAD (remote air dispersal) Airscoop are roof mounted units, connected to four remote ceiling diffusers via flexible ductwork. Ensures effective air distribution and enables the ceiling diffusers to be sited for maximum benefit in relation to the room shape and layout.

System to comprise: ABS Modern / Traditional style Airscoop, with internal dividers, fitted to an Airscoop Unit extended into the building to house a four-way damper, inlet/outlet connectors, flexible ductwork and ceiling diffusers. All necessary flashings, secret gutters, etc to be provided and installed by others.

Construction Details:

Airscoop Unit: Aluminium framed with 2.5mm high impact ABS cladding and louvres with rigid internal 9mm timber dividers; insect screening behind all louvres. An intermediate horizontal lid at the highest louvre level, reduces any drumming noise and improves the Perodynamics of the terminal. All exposed surfaces are treated with UV-stable polymeric resin. Fitted with 85% free area 4mm insect screen. Texture and standard RAL colour to match roof covering.

Airscoop Structural Base Unit: Aluminum box section sheathed 12mm external grade plywood supplied at maximum 1200mm long overall as standard and with rigid internal 9mm plywood dividers. This is installed within the roof covering, allowing the roof to be made watertight with flashings before the terminal is fitted. White insulation board clads the plywood below the roof line when base unit is visible within the room.

Four-way damper: Housed within the base unit is a motorised volume control damper. A single actuator mounted on an extruded aluminium frame operates the 10mm Foamalux insulation panels through a central gear mechanism. In the base of this unit is an actuator controlling insulated louvres with a 2.3W/m²K U-value. Actuators are supplied with 0.5m flying lead cable connected to junction box.

Inlet/Outlet Connectors: Rotationally moulded from medium density polyurethane.

Flexible Ducting: 20m uninsulated as standard, but insulated available upon request. Connected to grilles via black ABS square to round adaptors.

Ceiling Diffusers: Anodised aluminium constructed channel type egg crate diffusers. (600x600mm)

Performance data:

Resistant to continuous wind loads at 51m/s demonstrated by independent BRE tests.

Double bank terminal design is 100% effective against water penetration to BS EN 13030: 2001, Class A rating. Appraised under BS EN ISO 9001.

Standard Actuator (supplied with product):

24V modulating (0-10V signal).

Options:

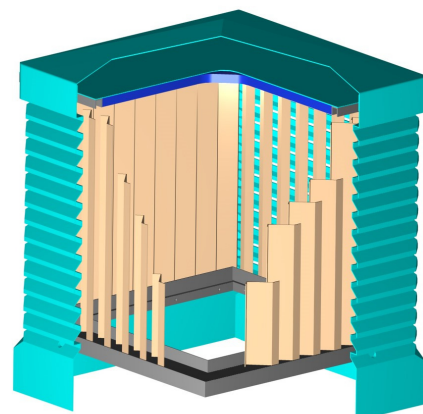
Special Terminal styles are available on request.

Acoustically treated version also available (up to 42dB Dnew).

White egg crate grilles with or without flanges



This image does not show ducting and grilles



Terminal Double Bank Louvre detail
100% (Class A) Rain Rejection, tested to
BS EN 13030: 2001
(dividers removed for clarity)

Information Update

PVCT17 - Issue 1 - August 2018



Email: projects@passivent.com
 Web: www.passivent.com
 Tel: +44 (0)1732 850770

Technical Drawing: ducting and grilles omitted for clarity.

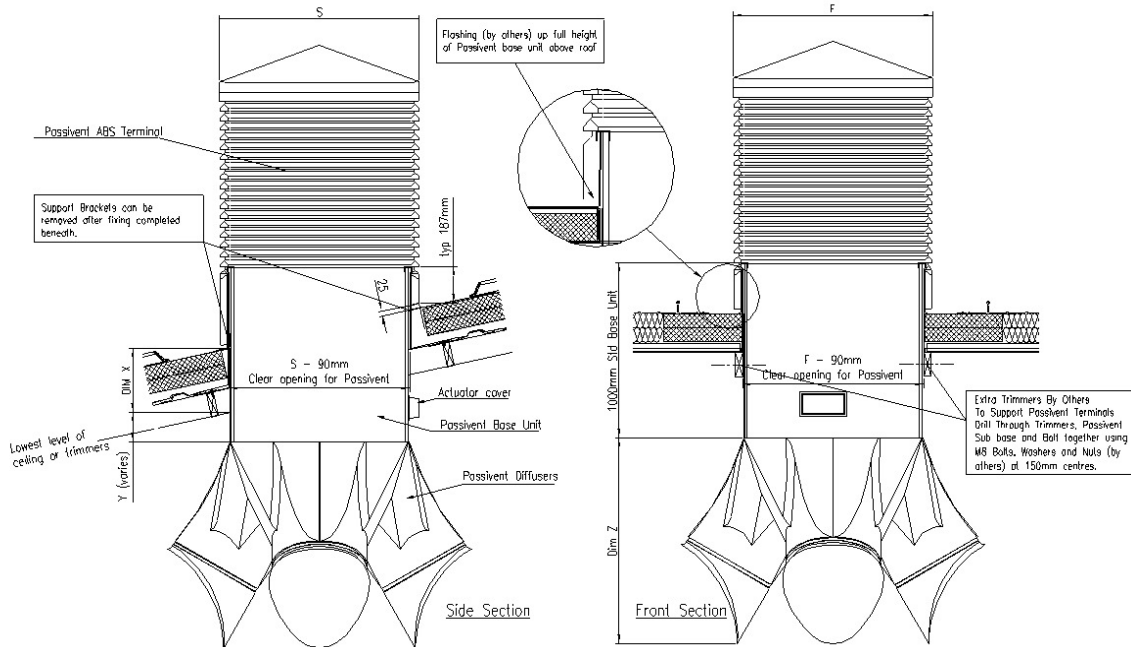


Table 1 demonstrates the Passivent RAD Airscoop Terminal dimensions, masses and required clear openings.

Table 1: Product Information:

Terminal Dimensions (mm)	Height ¹ (mm)	Weight of Terminal ² (Kg)	Clear Opening Required (mm)
575 x 575 s	818	69	485 x 485
800 x 800 s	1109	110	710 x 710
1025 x 1025 s	1350	116	935 x 935
1100dia c	1141	128	710 x 710
1400dia c	1363	197	935 x 935

S = Square C = Circular

- Table based on 0° Roof Pitch figures.
- Weights based on Structural Base Unit of 1000mm long.
 Square Terminals available for up to a 45° roof pitch. Circular Terminals available for up to a 30° roof pitch
 Standard package includes terminal, structural base unit, 4 way damper, diffusers, 20m Uninsulated flexible ducting and 4No anodised channel type egg crate grilles.

The weight of the terminal above excludes all flexible ducting and ceiling grilles.

Passivent maintains a policy of continuous development and reserves the right to amend product specifications without notice.