

BASIC AIRSCOOP SPECIFICATION DOCUMENT

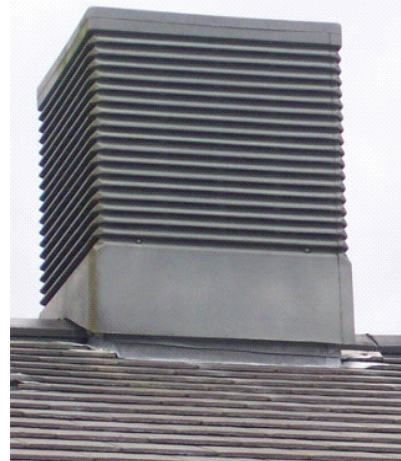
Product Description:

Passivent Basic Airscoop (Base Louvre) are roof mounted terminals which provide top-down or displacement ventilation using only wind power. Suitable for buildings with large open areas and open plan top floors.

System to comprise: ABS Modern / Traditional style Airscoop terminal, with internal dividers, is fitted to an Airscoop Base Unit. This base unit is extended into the building to house the Insulated Base Motorised Controllable Damper Unit. All necessary flashings, secret gutters, etc to be provided and installed by others.

Construction Details:

Airscoop Unit: Aluminum framed with high impact ABS cladding and louvres with rigid internal 9mm timber plywood dividers; insect screening behind all louvres. An intermediate horizontal lid at the highest louvre level, reduces any drumming noise and improves the aerodynamics of the terminal. All exposed surfaces are treated with UV-stable polymeric resin. Fitted with 85% free area 4mm insect screen. Texture and standard RAL colour to match roof covering.



Airscoop Structural Base Unit: Aluminum box section sheathed 12mm external grade plywood supplied at maximum of 1200mm long (overall) as standard and with rigid internal 9mm timber plywood dividers all the way down to the rear of the motorised louvre. This is installed within the roof covering, allowing the roof to be made watertight with flashings before the terminal is fitted. White insulation board clads the plywood below the roof line when base unit is visible within the room.

Insulated Base Motorised Controllable Damper:

In the base of this unit is an actuator controlling insulated damper with a 0.89W/m²K U-value. Actuators are supplied with 0.5m flying lead cable connected to junction box. Double skin aluminum louvre blades with ABS thermal break and blade compression seals within extruded aluminum frame. Aluminum two way diffuser below as standard, supplied to RAL9016 gloss (white). Other RAL colours are available on request.

Performance data:

Resistant to continuous wind loads at 51m/s demonstrated by independent BRE tests.

Double bank terminal design is 100% effective against water penetration to BS EN 13030: 2001, Class A rating.

Appraised under BS EN ISO 9001.

Standard Actuator (Supplied with product):

24V modulating (0-10V signal).

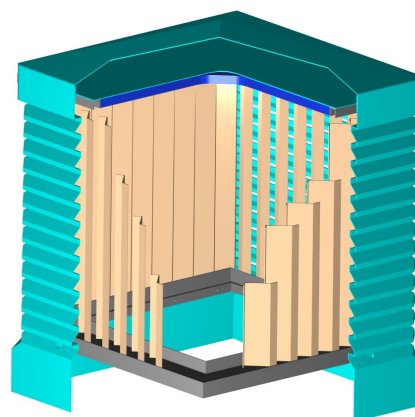
Options:

Special Terminal styles are available on request.

Acoustically treated version also available (up to 32 dB Dnew).

Cover Grille Options: two way or egg crate grille.

Additional segregated extension ducting pieces, if required.



Terminal Double Bank Louvre detail
100% (Class A) Rain Rejection, tested to
BS EN 13030: 2001
(dividers removed for clarity)

Information Update

PVCT15 - Issue 1 - August 2018



Email: projects@passivent.com
 Web: www.passivent.com
 Tel: +44 (0)1732 850770

Technical Drawing: Square Terminal

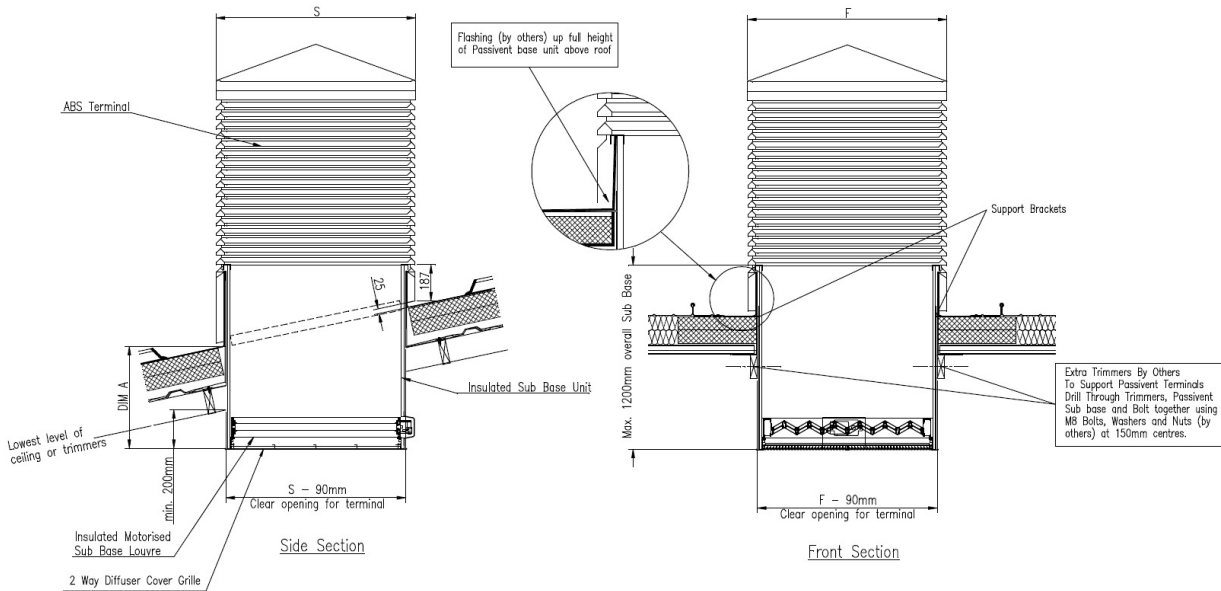


Table below demonstrates the Passivent Airscoop Terminal dimensions, masses and required clear openings

| Terminal Dimensions (mm) | Height ¹ (mm) | Weight of Terminal ² (Kg) | Clear Opening Required (mm) |
|--------------------------|--------------------------|--------------------------------------|-----------------------------|
| 575 x 575 s | 818 | 69 | 485 x 485 |
| 800 x 800 s | 1109 | 110 | 710 x 710 |
| 1025 x 1025 s | 1350 | 166 | 935 x 935 |
| 1250 x 1250 s | 1391 | 209 | 1160 x 1160 |
| 1100dia c | 1141 | 128 | 710 x 710 |
| 1400dia c | 1363 | 197 | 935 x 935 |
| 1700dia c | 1583 | 246 | 1160 x 1160 |

S = Square Terminal C = Circular Terminal

1. Table based on 0° Roof Pitch figures.
2. Weights based on Structural Sub Base Unit of 1000mm long.
 Square Terminals available for up to a 45° roof pitch. Circular Terminals available for up to a 30° roof pitch.

Passivent maintains a policy of continuous development and reserves the right to amend product specifications without notice.