

## AIRSTRACT SPECIFICATION DOCUMENT

### Product Description:

Passivent Airstract high capacity ventilation terminals are roof-mounted units, which combine high airflow capacity with low airflow resistance. They can be supplied with an optional Insulated Base Unit Louvre and intelligent Airflow Technology (iAT).

System to comprise: ABS Modern / Traditional style Airstract Roof Terminal fitted to a Structural Base Unit. All necessary flashings, secret gutters etc, to be provided and installed by others.

### Construction Details:

Airstract Terminal: aluminum framed with 2.3mm high impact, ABS cladding and louvres; insect screening behind all louvres. All exposed surfaces are treated with UV-stable polymeric resin. Fitted with 85% free area 4mm insect screen. Texture and standard RAL colour to match roof covering.

Airstract Structural Base Unit: aluminum box section sheathed 12mm external grade plywood supplied at maximum 1200mm long overall as standard. This is installed within the roof covering, allowing the roof to be made watertight with flashings before the terminal is fitted.

Optional Insulated Base Unit louvre (if applicable):

In the base of this unit is an actuator controlling insulated louvre with a 0.89W/m<sup>2</sup>K U-value. Actuators are supplied with 0.5m cable connected to junction box. Double skin aluminum louvre blades with ABS thermal break and blade compression seals within extruded aluminum frame. Powder coated aluminum two way diffuser below as standard. White insulation board clads the plywood sub base below the roof line when unit is visible within the room.

Optional intelligent Airflow Technology (iAT) fan (if applicable):

A low powered iAT boost fan will be supplied with mounting frame and orifice plate within the Airstract structural base unit.

### Performance data:

Resistant to continuous wind loads at 51m/s demonstrated by independent BRE tests.

Double bank terminal design is 100% effective against water penetration to BS EN 13030: 2001, Class A rating.

The square and rectangular Airstract terminals have a cd value of 0.53, the circular is 0.45. These cd values change to 0.57 and 0.51 respectively when the optional Insulated Base Unit Louvre is used. Appraised under BS EN ISO 9001.

### Standard Actuator (supplied with product):

24V modulating (0-10V signal) in optional base unit louvre only.

### Options:

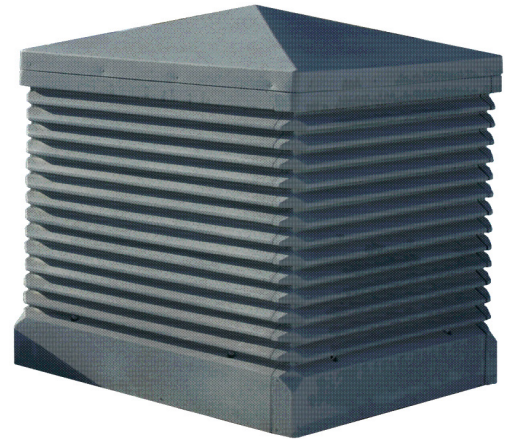
Insulated Base Unit Louvre package.

Integral iAT boost fan package.

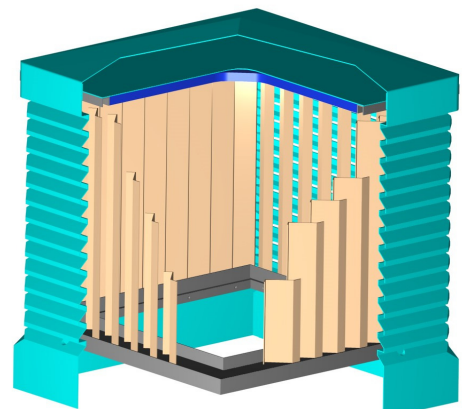
Special Terminal styles are available on request.

Acoustically treated version available.

Additional extension ducting pieces if required



Modern Style shown



Terminal Double Bank Louvre detail  
100% (Class A) Rain Rejection, tested to  
BS EN 13030: 2001

## Technical Drawing: Square Terminal (with optional insulated sub base unit louvre)

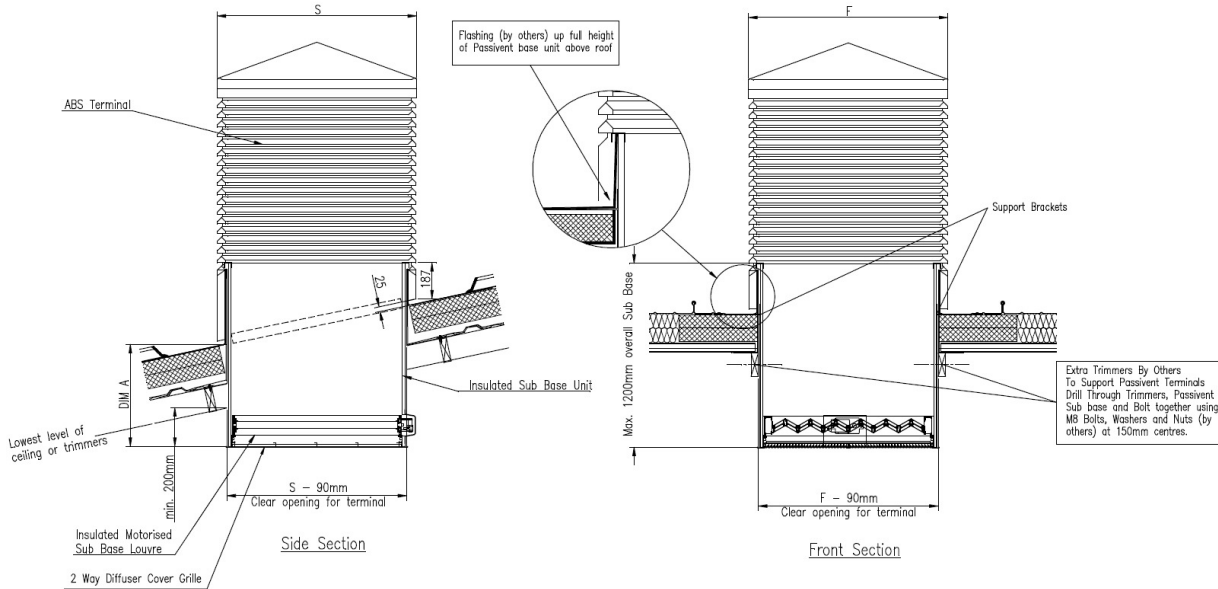


Table below demonstrates the Passivent Airstract Terminal dimensions, masses and required clear openings

Terminal Dimensions (mm)	Height <sup>1</sup> (mm)	Weight of Terminal <sup>2</sup> (Kg)	Clear Opening Required (mm)
575 x 575 s	818	40	485 x 485
575 x 800 r	818	52	485 x 710
575 x 1025 r	818	68	485 x 935
575 x 1250 r	818	76	485 x 1160
800 x 800 s	1109	63	710 x 710
800 x 1025 r	1109	79	710 x 935
800 x 1250 r	1109	91	710 x 1160
1025 x 1025 s	1350	95	935 x 935
1025 x 1250 r	1350	105	935 x 1160
1250 x 1250 s	1391	116	1160 x 1160
1100dia c	1141	87	710 x 710
1400dia c	1363	134	935 x 935
1700dia c	1583	162	1160 x 1160

S = Square Unit

R = Rectangular Unit

C = Circular Unit

1. Table based on 0° Roof Pitch figures.

2. Weights based on Structural Sub Base Unit of 1000mm long (Base Unit Louvre and fan are excluded from these weights).

Square / Rectangular Terminals available for up to a 45° roof pitch. Circular Terminals available for up to a 30° roof pitch.

Rectangular Terminals have their shorter dimension running across the roof (longer up the roof).

# Information Update

PVCTI3 – Issue 1 – August 2018



Email: [projects@passivent.com](mailto:projects@passivent.com)

Web: [www.passivent.com](http://www.passivent.com)

Tel: +44 (0)1732 850770

## Optional iAT versions:

An optional integral low powered iAT boost fan will be supplied with a mounting frame and orifice plate within the Airstract structural base unit.

## iAT Fan details -

	1025x1025s, 1400c	1250x1250s, 1700c
Supply voltage	220-240V 50/60Hz	
Electrical power rating (W)	45	60
Sound pressure level (dB(A))	45	46

## Airstract system flow rates at selected counter pressure (l/s)\*

	2Pa	3Pa	4Pa	5Pa
1025x1025s or 1400c Airstract with fan	530	440	350	265
1250x1250s or 1700c Airstract with fan	580	510	435	340

\*Counter pressure includes terminal, structural base unit, orifice plate and open base unit motorised louvre.