

AIRSTRACT® SPECIFICATION DOCUMENT

Product Description:

Passivent Airstract high capacity ventilation terminals are roof-mounted units, which combine high airflow capacity with low airflow resistance. They can be supplied with an optional Insulated Base Unit Louvre and intelligent Airflow Technology (iAT).

System to comprise: ABS Modern / Traditional style Airstract Roof Terminal fitted to a Structural Base Unit. All necessary flashings, secret gutters etc, to be provided and installed by others.

Construction Details:

Airstract Terminal: aluminum framed with 2.3mm high impact, ABS cladding and louvres; insect screening behind all louvres. All exposed surfaces are treated with UV-stable polymeric resin. Fitted with 85% free area 4mm insect screen. Texture and standard RAL colour to match roof covering.

Airstract Structural Base Unit: aluminum box section sheathed 12mm external grade plywood supplied at maximum 1200mm long overall as standard. This is installed within the roof covering, allowing the roof to be made watertight with flashings before the terminal is fitted.

Optional Insulated Base Unit louvre (if applicable):

In the base of this unit is an actuator controlling insulated louvre with a 0.89W/m²K U-value. Actuators are supplied with 0.5m cable connected to junction box. Double skin aluminum louvre blades with ABS thermal break and blade compression seals within extruded aluminum frame. Powder coated aluminum two way diffuser below as standard. White insulation board clads the plywood sub base below the roof line when unit is visible within the room.

Optional intelligent Airflow Technology (iAT) fan (if applicable):

A low powered iAT boost fan will be supplied with mounting frame and orifice plate within the Airstract structural base unit.

Performance data:

Resistant to continuous wind loads at 51m/s demonstrated by independent BRE tests.

Double bank terminal design is 100% effective against water penetration to BS EN 13030: 2001, Class A rating.

The square and rectangular Airstract terminals have a cd value of 0.53, the circular is 0.45. These cd values change to 0.57 and 0.51 respectively when the optional Insulated Base Unit Louvre is used. Appraised under BS EN ISO 9001.

Standard Actuator (supplied with product):

24V modulating (0-10V signal) in optional base unit louvre only.

Options:

Insulated Base Unit Louvre package.

Integral iAT boost fan package.

Special Terminal styles are available on request.

Acoustically treated version available.

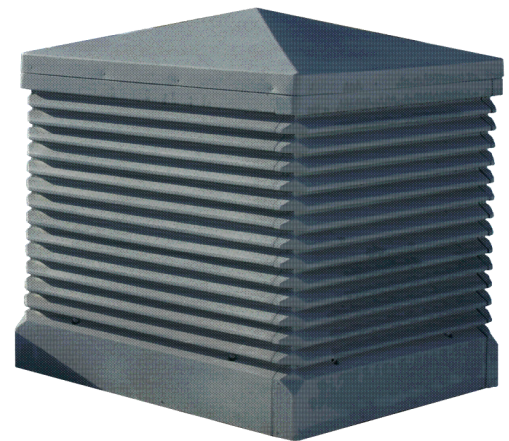
Additional extension ducting pieces if required

No Leak Guarantee:

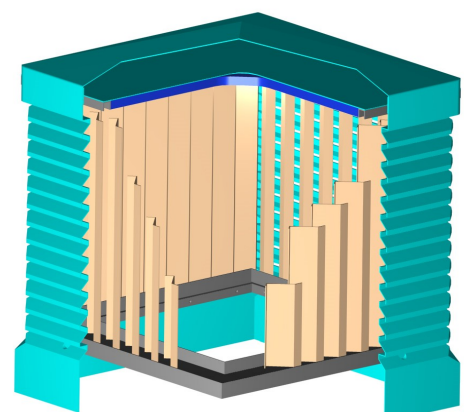
We offer a 15 Year No Leak Guarantee for this product. This is effective from the date of installation and the installation must be in accordance with the Passivent fixing instructions. Terms and conditions apply - see further information on page 4 or at passivent.com/nlg.

IES

The Airstract and Airstract iAT roof terminals are both available in the IES Virtual Environment passivent.com/IES.



Modern Style shown



Terminal Double Bank Louvre detail
100% (Class A) Rain Rejection, tested to
BS EN 13030: 2001



Information Update

PVCTI3 – Issue 3 – March 2025

projects@passivent.com
www.passivent.com
+44 (0)1732 850770



Technical Drawing: Square Terminal (with optional insulated sub base unit louvre)

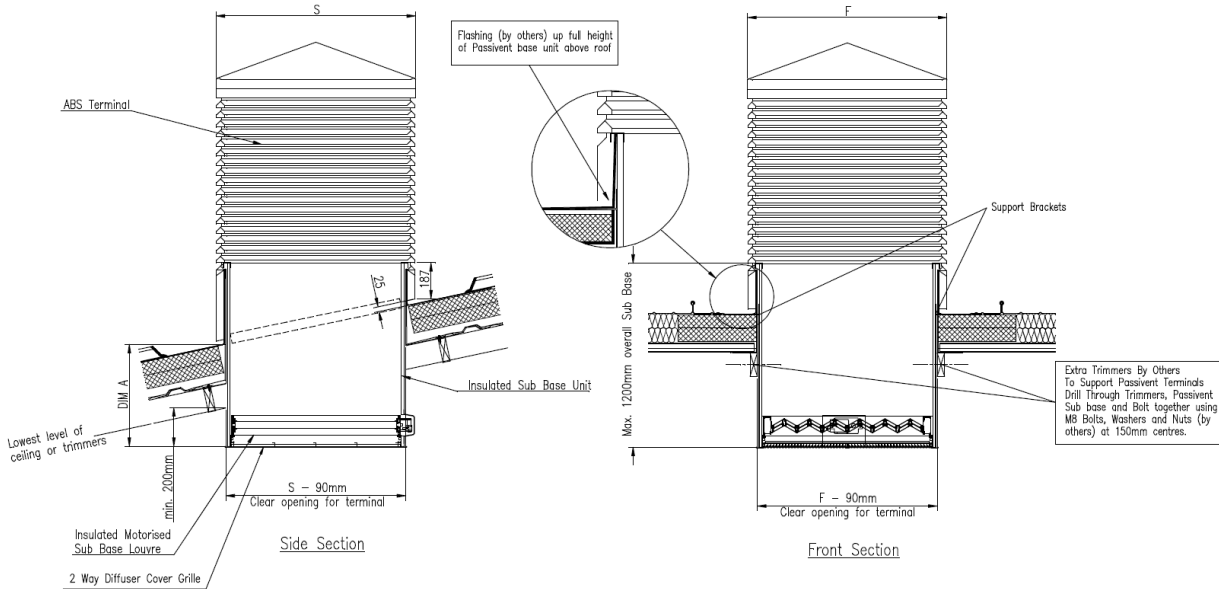


Table below demonstrates the Passivent Airstrat Terminal dimensions, masses and required clear openings

Terminal Dimensions (mm)	Height ¹ (mm)	Weight of Terminal ² (Kg)	Clear Opening Required (mm)
575 x 575 s	818	40	485 x 485
575 x 800 r	818	52	485 x 710
575 x 1025 r	818	68	485 x 935
575 x 1250 r	818	76	485 x 1160
800 x 800 s	1109	63	710 x 710
800 x 1025 r	1109	79	710 x 935
800 x 1250 r	1109	91	710 x 1160
1025 x 1025 s	1350	95	935 x 935
1025 x 1250 r	1350	105	935 x 1160
1250 x 1250 s	1391	116	1160 x 1160
1100dia c	1141	87	710 x 710
1400dia c	1363	134	935 x 935
1700dia c	1583	162	1160 x 1160

S = Square Unit R = Rectangular Unit C = Circular Unit

- Table based on 0° Roof Pitch figures.
- Weights based on Structural Sub Base Unit of 1000mm long (Base Unit Louvre and fan are excluded from these weights).
Square / Rectangular Terminals available for up to a 45° roof pitch. Circular Terminals available for up to a 30° roof pitch.
Rectangular Terminals have their shorter dimension running across the roof (longer up the roof).

Passivent maintains a policy of continuous development and reserves the right to amend product specifications without notice.

Information Update

PVCTI3 – Issue 3 – March 2025

projects@passivent.com
www.passivent.com
+44 (0)1732 850770



Optional iAT versions:

An optional integral low powered iAT boost fan will be supplied with a mounting frame and orifice plate within the Airstract structural base unit.

iAT Fan details -

	1025x1025s, 1400c	1250x1250s, 1700c
Supply voltage	220-240V 50/60Hz	
Electrical power rating (W)	45	60
Sound pressure level (dB(A))	45	46

Airstract system flow rates at selected counter pressure (l/s)*

	2Pa	3Pa	4Pa	5Pa
1025x1025s or 1400c Airstract with fan	530	440	350	265
1250x1250s or 1700c Airstract with fan	580	510	435	340

*Counter pressure includes terminal, structural base unit, orifice plate and open base unit motorised louvre.

15 Year No Leak Guarantee

No annual servicing required

This guarantee covers the **Passivent Airscoop®**, **Airstract®**, and **Hybrid Plus Airstract®** Roof Ventilation Terminals

- We guarantee the above-mentioned terminals will not leak for 15 years from the date of installation.
- The patented double-bank louvre system in the terminal means that your building will be 100% ventilated regardless of the weather conditions.
- No servicing is required - there are no mechanical or electrical items, such as actuators, within the terminal to maintain, therefore no external/roof access is required.



Terms & Conditions

The 15 year guarantee period is effective from the date of installation.

The installation must be in accordance with Passivent fixing instructions otherwise this guarantee will be invalid.

This guarantee does not apply to any failure or defect caused by accidental damage, neglect, abuse, misuse, alteration, shipping damage, unauthorised repair or modification, or causes external to the product such as, but not limited to, a natural disaster.

This guarantee is in addition to your statutory rights and is transferable to any future owner of your building provided that the terminals have been paid for.

passivent

building
product design

Passivent is certified under the ISO 9001 quality standard, ISO 14001 environmental standard and ISO 45001 health and safety standard.

910510
May 2023 | Issue 1

